

Child Care Quality System: Enhanced Subsidy Grants for Family Child Care

Programs that are **High Quality** or **High Quality Plus** will receive an enhanced monthly subsidy grant for the average number of subsidy children the program served during the 12-month documentation period.

The fixed monthly grant payment is calculated based on the average monthly number of subsidy children cared for in the previous 12 months and multiplying that by the High Quality or High Quality Plus payment amount.

The CCQS emphasizes components of quality that support the best outcomes for children.

The Office of Child Care provides an enhanced subsidy grant that compensates licensees for those components of quality leading to the best outcomes for children. The amount of the enhanced subsidy grant considers fixed costs of quality including:

- Increasing wages for caregivers
- Coaching
- Cost of professional development for licensee and caregivers
- Family engagement
- Materials

The grant payment compensates a program for its previous investments in quality. Once a family child care program is High Quality or High Quality Plus and receives the enhanced grant payment, it will have discretion on how it utilizes these additional resources. Programs will not have to provide documentation of how the enhanced subsidy grant payment is used.

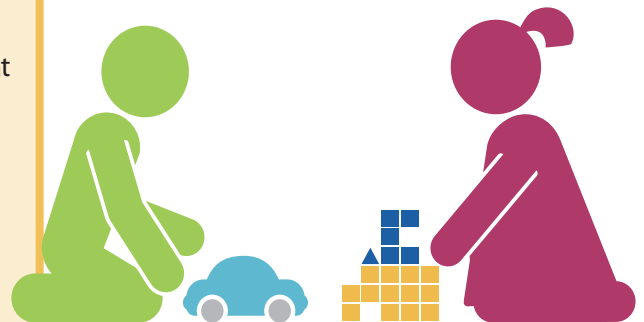
Programs need to be High Quality or High Quality Plus at the beginning of each renewal period in order to continue receiving the enhanced subsidy grant payment. The average number of subsidy children is recalculated at the beginning of each renewal period.

The monthly amount for each subsidy child:



Example of an enhanced subsidy grant payment for a High Quality family child care program that served an average of six subsidy children during their 12-month documentation period:

Average number of subsidy children over **12-month documentation period** = 6 x **\$100** monthly enhanced subsidy grant payment = **\$600 per month** for 12-month certification period.



Enhanced subsidy grant payments are:



A separate payment from the subsidy payment and do not show in the DWS Provider Portal



Deposited in the middle of the month



Deposited into the same bank account as subsidy payments