

TRANSPORTATION INDUSTRY BRIEF



Fall 2017

Beaver, Garfield, Iron, Kane and Washington Counties

Transportation and Warehousing Employment and Wages

Industry Name (Code)	2016 Employment	2016 Avg. Monthly Wage	Dec. 2015 to Dec. 2016 % Change in Employment
Transportation and Warehousing (48, 49)	4,692	\$3,505	10.9%
Truck Transportation (484)	1,442	\$3,104	2.7%
General Freight Trucking (4841)	1,204	\$3,161	3.0%
Specialized Freight Trucking (4842)	237	\$2,812	1.7%
Transit and Ground Passenger Transportation (485)	521	\$1,896	14.2%
Support Activities for Transportation (488)	161	\$3,043	12.4%
Couriers and Messengers (492)	284	\$4,064	25.2%
Total Area Nonfarm Payroll Jobs	86,357	\$2,749	5.6%
Transportation and Warehousing (48-49) as a % of Total	5.4%	127.5%	

Transportation and Warehousing History

Year	Employment	Avg. Monthly Wage	% of Utah Avg. Monthly Wage	Number of Establishments	Payrolls (Millions)	% of Total Area Jobs	% of Total Area Payroll
2009	3,669	\$3,167	99.9%	239	\$121.4	4.5%	6.0%
2010	3,581	\$3,321	102.7%	233	\$142.7	5.2%	7.2%
2011	3,742	\$3,309	100.1%	251	\$148.6	5.4%	7.3%
2012	3,748	\$3,316	97.9%	267	\$149.1	5.2%	7.1%
2013	3,740	\$3,420	100.0%	226	\$153.5	5.0%	6.9%
2014	4,182	\$3,410	97.0%	259	\$171.1	5.4%	7.1%
2015	4,363	\$3,552	98.1%	265	\$186.0	5.4%	7.2%
2016	4,692	\$3,505	94.6%	279	\$197.3	5.4%	6.9%



Largest Employers

1. Skywest Airlines
2. Wal-Mart (Distribution Center)
3. Andrus Transportation Services
4. Family Dollar (Distribution Center)
5. U.S. Postal Service
6. United Parcel Service
7. Parke Cox Trucking Company
8. St. George Executive Shuttle
9. Gurney Trucking
10. Union Pacific Railroad
11. Parks Transportation Inc.
12. Federal Express
13. Clark Bradshaw Trucking
14. Norm Howard Trucking
15. Host Transportation Inc
16. Tuf Transport Services
17. Rhine Construction
18. MST Trucking
19. Exxel Outdoors
20. Mountain West Milk Transport
21. Bakston Freight Systems

TRANSPORTATION INDUSTRY BRIEF



Transportation and Warehousing Jobs in Demand Southwest Area

Occupation Code	Occupation Title	Inexperienced Hourly Wage	Median Hourly Wage
53-3032	Heavy and Tractor-Trailer Truck Drivers	\$14.90	\$18.70
53-7063	Machine Feeders and Offbearers *	\$12.50	\$17.10
43-5032	Dispatchers, Except Police, Fire, and Ambulance	\$13.30	\$18.20
53-7062	Laborers and Freight, Stock, and Material Movers, Hand	\$8.90	\$11.00
53-7051	Industrial Truck and Tractor Operators	\$11.90	\$14.40
53-3033	Light Truck or Delivery Services Drivers	\$9.20	\$13.80
53-3041	Taxi Drivers and Chauffeurs	\$8.40	\$9.40
43-3031	Bookkeeping, Accounting, and Auditing Clerks	\$10.20	\$15.00
43-5071	Shipping, Receiving, and Traffic Clerks	\$10.60	\$14.50
43-4051	Customer Service Representatives	\$10.10	\$13.20
43-5061	Production, Planning, and Expediting Clerks	\$15.30	\$19.60
43-5081	Stock Clerks and Order Fillers	\$9.10	\$11.90
43-4181	Reservation and Transportation Ticket Agents and Travel Clerks *	\$10.60	\$12.50
43-6014	Secretaries and Administrative Assistants, Except Legal, Medical, and Executive	\$9.70	\$13.90
11-1021	General and Operations Managers	\$12.80	\$24.40
49-3031	Bus and Truck Mechanics and Diesel Engine Specialists	\$15.00	\$20.40
53-1021	First-Line Supervisors of Helpers, Laborers, and Material Movers, Hand	\$8.10	\$13.70
43-1011	First-Line Supervisors of Office and Administrative Support Workers	\$14.40	\$19.90
43-4071	File Clerks	\$8.50	\$11.40
43-5011	Cargo and Freight Agents *	\$11.20	\$18.80
53-1031	First-Line Supervisors of Transportation and Material-Moving Machine and Vehicle Operators	\$22.00	\$28.90
41-3099	Sales Representatives, Services, All Other	\$10.10	\$11.90

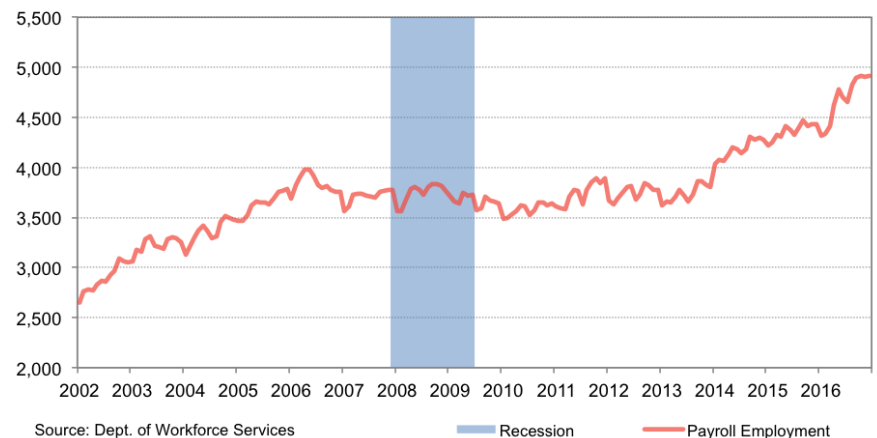
Source: U.S. Bureau of Labor Statistics

* Statewide Wages

Total Payroll Jobs	
December 2016	
Statewide	1,455,893
Southwest	87,975
% of Statewide	6.0%

Transportation and Warehousing Payroll Jobs	
December 2016	
Statewide	68,020
Southwest	4,916
% of Statewide	7.2%

Transportation and Warehousing Employment Southwest



Equal Opportunity Employer/Program

Auxiliary aids and services are available upon request to individuals with disabilities by calling 801-526-9240. Individuals with speech or hearing impairments may call the Relay Utah by dialing 711. Spanish Relay Utah: 1-888-346-3162.